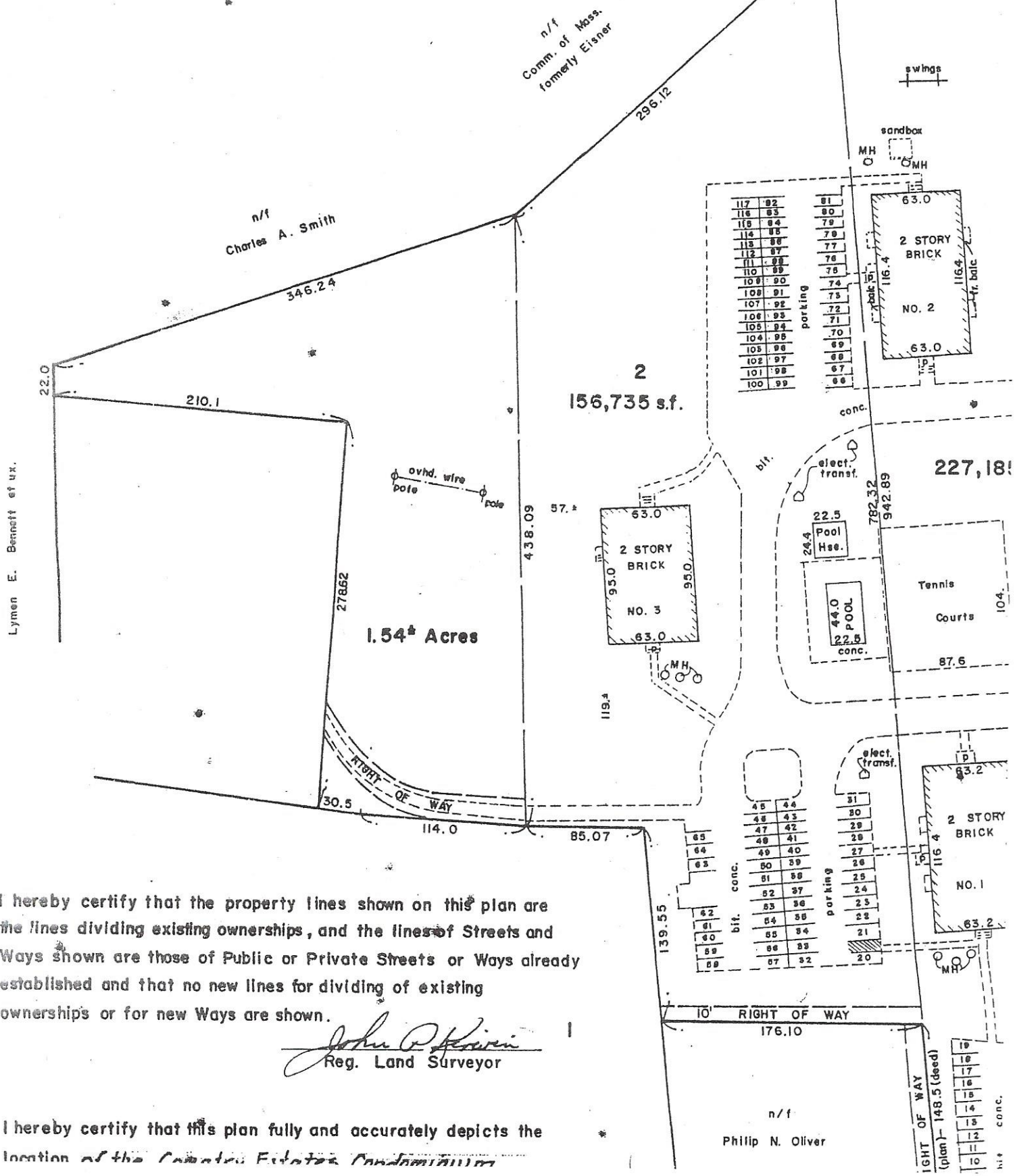


NOTE: Being lot 2 on a plan by Joseph W. Moore Co. Inc., Civil Engineers dated September 24, 1970 Recorded in Middlesex So. Dist. Registry of Deeds in Book 11928, Page 261 also part of lot shown on plan by same dated May 15, 1970 Recorded in Book 11839, Page 530 also lot shown on a plan by Allen C. Davis, C.E. dated July 1977 Recorded in Book 13397, Page 123



NOTE: I hereby certify that the property lines shown on this plan are the lines dividing existing ownerships, and the lines of Streets and Ways shown are those of Public or Private Streets or Ways already established and that no new lines for dividing of existing ownerships or for new Ways are shown.

John P. Oliver
Reg. Land Surveyor

NOTE: I hereby certify that this plan fully and accurately depicts the location of the Country Estates Condominium

n/f
Philip N. Oliver

PARKING SPACE	CONDO NO.	PARKING SPACE	CONDO NO
21	139	77	232
22	138	78	234
23	137	79	212
24	136	80	211
25	114	81	210
26	110	82	236
		83	238
28	125	84	312
29	123	85	239
30	112	86	219
31	334	93&87	230
32	135	88	229
33&34	129	89	228
35	128	90	227
36	130	91	226
37	131	92	224
38	132	94	237
39	133	95	222
40	134	96	220
41	119	97&98	221
42	118	99	217
43&44	111	100	315
45&46	331		
47&59	336		
		103	325
49	113	104	323
50	117		
51	116	106	320
52	124	107	321
53	126	108	324
54	127	109	326
55	120	110	327
56	121	111	317
		112	316
60	337	113	322
61	335	114	310
62	333		313
63	332		
64	330		
65	122		
66	216		
67	215		
68	233		
69	235		
70	213		
71	223		
72	231		
73	225		
75	214		
76	218		